



# Sustainable Management Service



## WHY SMS VERIFIED?

**TRANSPARENCY**  
Where my coffee is coming from

**CONTINUOUS IMPROVEMENT**

**GUARANTEE ABOUT  
BASIC COMPLIANCES**

**PROGRAM ADAPTED  
TO ROASTER NECESSITY**

**TRACEABILITY**

**PROJECT VISIBILITY**

**FARM INFORMATION**  
Productivity and quality aspects

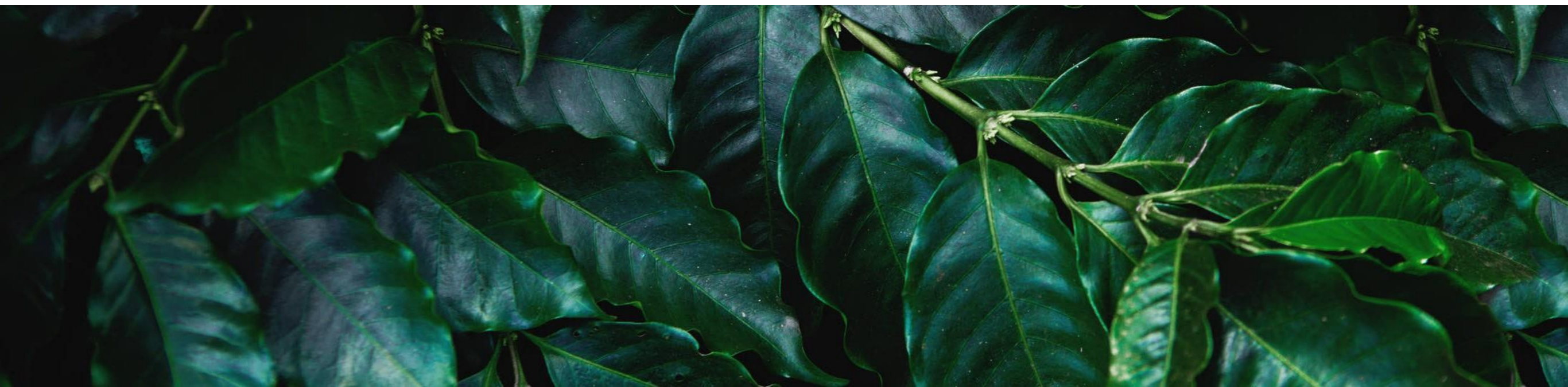
**CLIENT COMMUNICATIONS**  
SMS Origin report and SMS annual report

## SMS STRUCTURE

**SMS FARMERS**

—————  
**SMS CODE  
ASSESSMENT AREAS**

—————  
**SMS  
PRODUCTIVITY &  
QUALITY FOCUS**








SMS CODE ASSESSMENT  
AREAS

48

CRITICAL  
CRITERIA

 Social & labor practices


 Management and transparency


 Ecosystem protection


SMS PRODUCTIVITY &  
CONTINUOUS  
IMPROVEMENT FOCUS

29

SMS  
DRIVERS

 Productivity

 Soil conditions

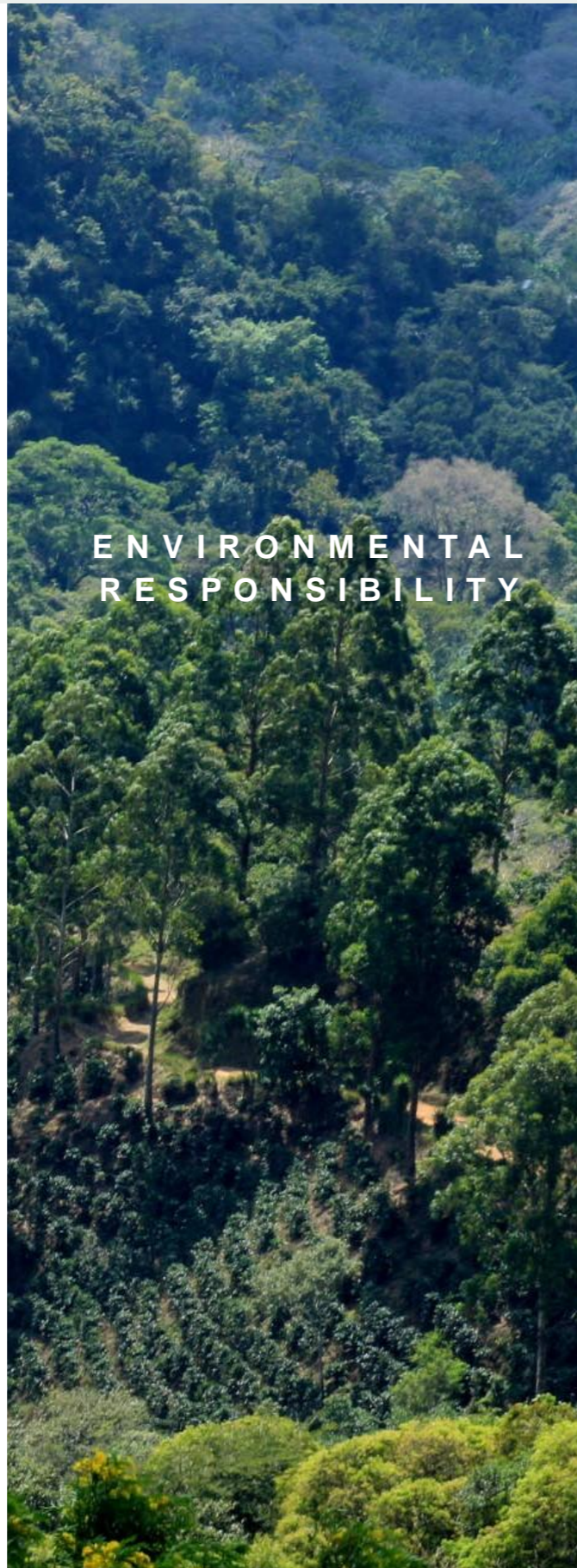
 Quality improvement



MANAGEMENT AND  
TRANSPARENCY



ENVIRONMENTAL  
RESPONSIBILITY



SOCIAL AND  
WORK LIABILITY



PRODUCTIVITY  
AND QUALITY





## SMS Origin Report

- Information related to farmer chain supply
- Annual work plan
- Farmer list



## Traceability Report

- Report linked to shipments



## SMS Verified Annual Report

- SMS Code Assessment Results
- Improvement areas identification

SMS VERIFIED IMPLEMENTATION DETAILS

1



### SMS Farmer Baseline

2



### Farmer and farm profile in SMS Integrity Data management and visualization platform

3



### SMS Code assessment Farm Visit

4



### Identification of improvement areas Action plans

5



### Action plans | Training Implementation

6

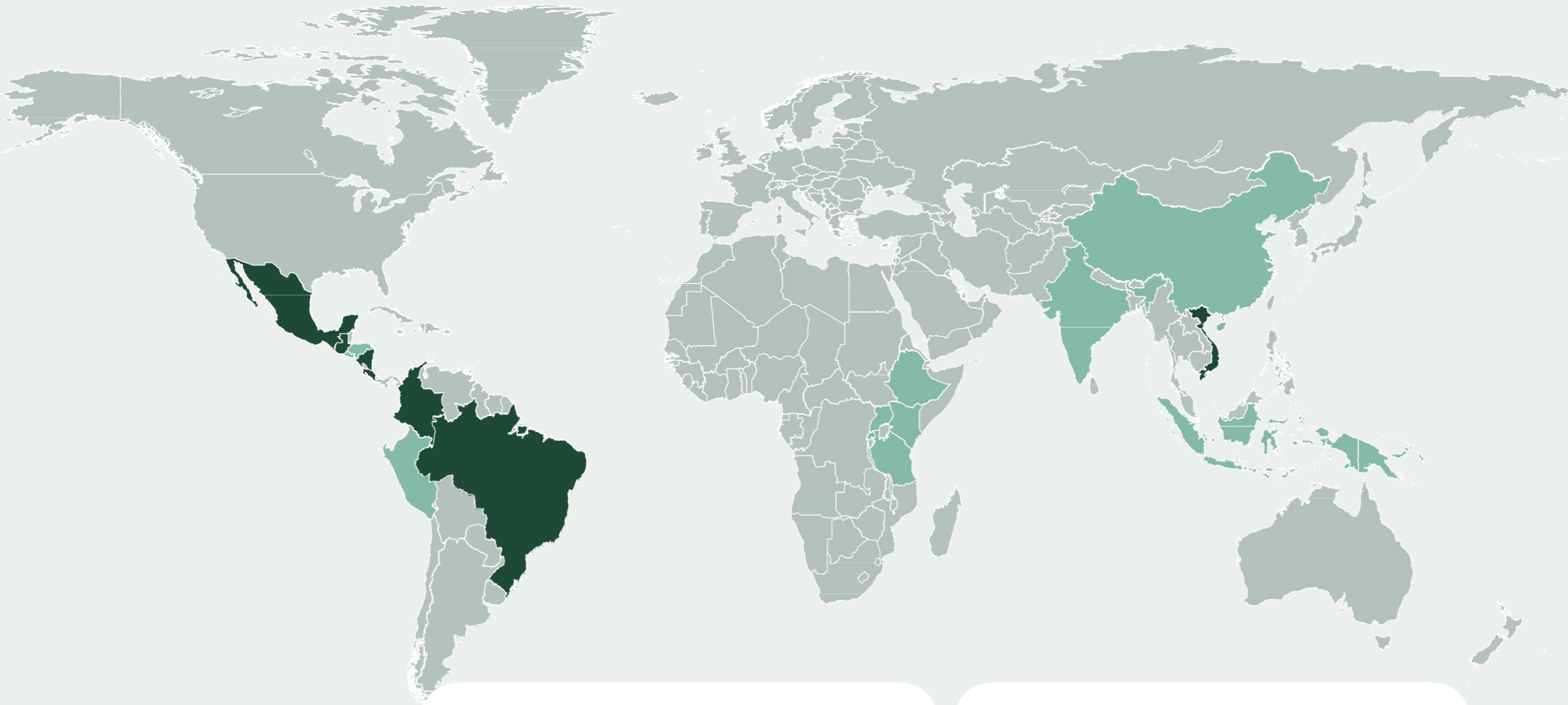


### Year End Meeting

7



### External Audit of SMS Verified is possible Possibility for external audit



SMS VERIFIED ORIGINS

**Brazil**  
**Colombia**  
**Costa Rica**  
**Nicaragua**

**Mexico**  
**Vietnam**  
**Guatemala**

SMS ORIGINS

**China**  
**Indonesia**  
**Tanzania**  
**El Salvador**  
**Peru**

**Kenya**  
**Uganda**  
**Rwanda**  
**Ethiopia**  
**India**

**Honduras**  
**Papua New Guinea**





GCP recognition of SMS Verified as Coffee SR Code equivalent - 2nd party assurance - is the result of a 12-month long process that included research, interviews with stakeholders, a beta testing phase and an external evaluation.

The assessment includes not only a review of how SMS Verified meets the requirements of the GCP Coffee SR Code, 2nd party assurance, but also how it is implemented in at a local and global level.



